

# Monthly PAX Trends Snapshot

## MAR 2014



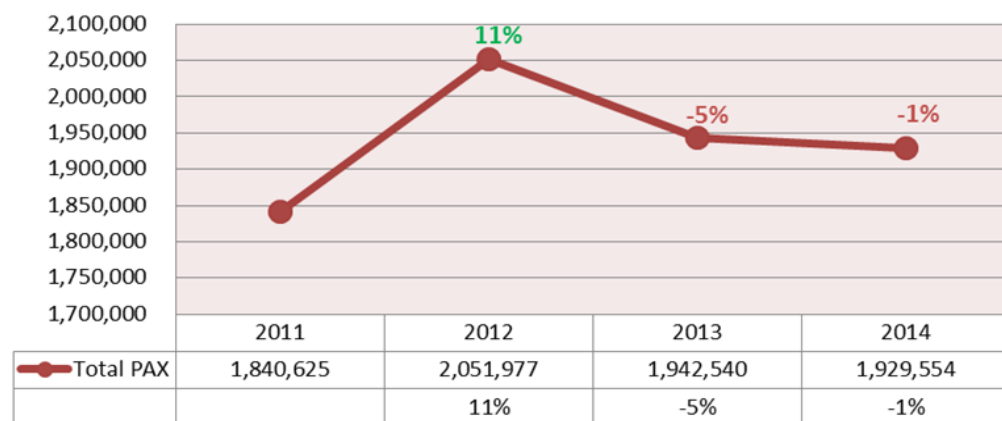
شركة مطار البحرين  
bahrain airport company

Snapshots will be sent to our readers on a monthly basis.

Our aim is to constantly keep you updated and informed on key passenger data, trends and highlights for the concerned month.

We hope you find our Snapshots informative as we continue to improve and enhance its content.

(Jan-Mar) Cumulative Y-O-Y Total PAX  
(2011-2014)



Source: Traffic Movement Sheet, BAS; compilation and analysis by Commercial and Marketing, BAC.

- ✈ March 2014 Total PAX amounted to 658,419.
- ✈ 2013-2014 (Jan-Mar) Total PAX witnessed a decline of 1% (or 12,986).
- ✈ As expected and mentioned in our February 2014 report, the gap is narrowing with regards to the cumulative decline; as we move into the comparative months where Gulf Air's restructuring had already occurred during the previous year.

2013-2014 Total PAX witnessed an increase of 8.6% (or 52,109).

The main highlights of the month were:

JED: +58% (or 10,943) in Total PAX:

- Disembarking: up 60% (or 5,723).
- Joining: up 56% (or 5,220).

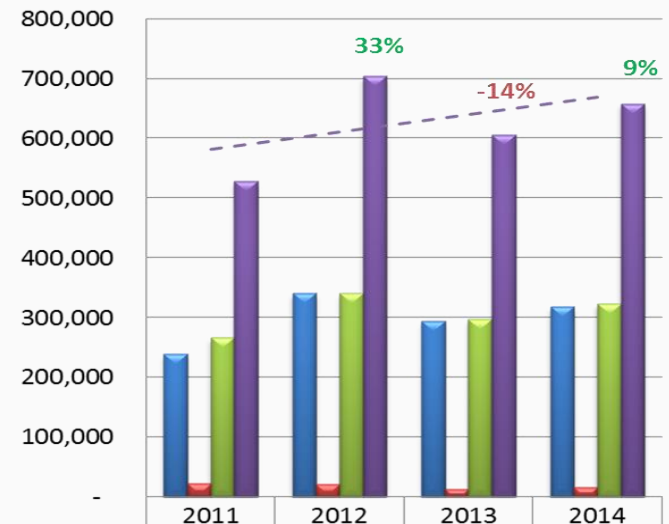
DOH: +11% (or 7,134) in Total PAX:

- Disembarking: up 9% (or 2,713).
- Joining: up 15% (or 4,732).

KWI: +21% (or 7,112) in Total PAX:

- Disembarking: up 30% (or 4,504).
- Joining: up 14% (or 2,594).

**Mar PAX Trends (2011-2013)**



	2011	2012	2013	2014
Disembarking	239,629	341,079	295,100	318,660
Transit	22,586	22,394	13,382	16,118
Joining	266,378	340,927	297,828	323,641
Total	528,593	704,400	606,310	658,419

**Top 10 Airports Rank Displacement (Jan-Mar):**

#	Airport	2014 Vs. 2013
1	DXB	-
2	DOH	-
3	KWI	-
4	AUH	-
5	MCT	-
6	JED	6
7	RUH	(1)
8	BOM	-
9	DMM	(2)
10	LHR	(1)

**Top 10 Airports Growth/Decline (MAR 2013-2014):**

Rank	Airport	Total PAX	Airport	Total PAX
1	JED	10,943	DXB	(4,606)
2	DOH	7,134	IAD	(4,201)
3	KWI	7,112	SHJ	(1,687)
4	MHD	6,643	BKK	(1,646)
5	RUH	6,627	LHR	(1,621)
6	TRV	5,124	BGW	(1,530)
7	KHI	3,564	MCT	(1,330)
8	LHE	2,648	HKG	(1,161)
9	ISB	2,425	ADD	(636)
10	SKT	2,271	IST	(480)